

CHÂTEAU DU GRAND-LUCÉ



STAY NOBLE

STATUE OF AURA. GODDESS OF THE WIND. A GIFT FROM KING LOUIS XV 1764.



CLASSIC SPLENDOR

IN 1760, BARON JACQUES PINEAU DE VIENNAY, INSTRUCTED ARCHITECT MATHIEU DE BAYEUX TO CONSTRUCT A SUMMER PALACE ON THE SITE OF THE BARON'S MEDIEVAL CASTLE. PINEAU DE VIENNAY DEMANDED THE MOST AU COURANT IN DESIGN, SEARCHING FOR EIGHTEENTH CENTURY EXTRAVAGANCE.

THE PIÈCES DE RÉSISTANCE WERE THE NUMEROUS STATUES COMMISSIONED BY KING LOUIS XV (AS EXACT REPLICAS OF STATUES AT VERSAILLES) AND PLACED ON THE CHATEAU GROUNDS AS A GIFT TO THE BARON. IN 1764, THE CHÂTEAU DU GRAND-LUCÉ WAS COMPLETED - A STUNNING REPRESENTATION OF

CLASSISM AND MODERNITY - INTENDED FOR SPLENDOR.

CHÂTEAU DU GRAND-LUCÉ IS ONE OF THE MOST IMPORTANT EXAMPLES OF FRENCH NEOCLASSICAL ARCHITECTURE. THE CHATEAU AND THE GARDENS WERE CONSTRUCTED WITH PRECISION AND SYMMETRY ON A LONG AXIS. IT WAS A BEACON FOR THE AGE OF ENLIGHTENMENT AND HOSTED VISITORS INCLUDING VOLTAIRE, ROUSSEAU AND DIDEROT. DURING WWII, PAINTINGS FROM THE LOUVRE WERE HIDDEN IN THE CHATEAU, AND, FOR A PERIOD, IT WAS USED AS A HOSPITAL FOR WOUNDED BRITISH OFFICERS.

THE CHATEAU HAS SURVIVED WARS AND REVOLUTIONS, HOSTED NOBLES, WRITERS AND PHILOSOPHERS, AND HAS BEEN THE EXQUISITE BACKDROP TO DIPLOMATIC EVENTS, WEDDINGS AND CELEBRATIONS. AFTER AN IMMACULATE RESTORATION OF THE GARDENS AND INTERIORS, CHÂTEAU DU GRAND-LUCÉ IS AVAILABLE FOR PRIVATE HIRE.

CHÂT
-EAU

LIVE LIKE A NOBLEMAN



BUILT FOR NOBILITY, CHATEAU DU GRAND-LUCE IS MAGNIFICENT IN SCALE AND BREATHTAKING IN ITS BEAUTY. THE HISTORY OF THE CHATEAU IS HUMBLING, HAVING HOSTED THE FRENCH ARISTOCRACY FOR CENTURIES. THE SAME TABLEAU PONDERED BY THE GREAT THINKERS OF THE AGE OF ENLIGHTENMENT, IS UNCHANGED AND CONTINUES TO INSPIRE -- CENTURIES LATER.

SURROUNDED BY THE ORIGINAL MEDIEVAL WALL OF BARON JACQUES PINEAU DE VIENNAIS' ANCESTRAL PROPERTY, THE CHATEAU'S EIGHTY ACRES INCLUDE CLASSIC FRENCH GARDENS, EXOTIC GARDEN WITH A SWIMMING POOL, POTAGER GARDEN (COMPLETE WITH VEGETABLES, HERBS AND FRUIT FOR THE KITCHEN), ORCHARDS, CUTTING GARDENS FOR FLOWERS, WORKING GREENHOUSES, ORANGERIE, LAKE, AND A PRIVATE HISTORIC WHITE OAK FOREST WITH TRAILS LEADING TO CENTURIES OLD STATUES SECRETED IN THE FOLIAGE.

IN ADDITION TO THE MAIN CHATEAU, THERE IS A RECENTLY RESTORED SPA AND FITNESS SALON (THE ORIGINAL LAUNDRY HOUSE), NEWLY RESTORED EXQUISITE BALLROOM IN THE FORMER STABLES, AND MULTIPLE UNRESTORED BUILDINGS ON SITE - WHICH ARE INCREDIBLE TO EXPLORE.



CHÂTEAU DU GRAND-LUCÉ

LE GRAND - LUCÉ

THE MAIN CHATEAU IS FORTY-FIVE THOUSAND SQUARE FEET OF SPLENDOR. THERE ARE A TOTAL OF SEVENTEEN BEDROOMS AND SUITES INCLUDING FOURTEEN ROOMS ENSUITE, AN ADDITIONAL AU PAIR'S ROOM WITH BATH ACROSS THE HALL, AND TWO FABULOUS NEWLY RESTORED PIEDS-À-TERRRE (IN AN ADJOINING BUILDING) -- A STUDIO AND A TWO-BEDROOM, WITH INCREDIBLE LIVING SPACE INCLUDING THEIR OWN GALLEY KITCHENS -- PETITES CUSINES.

THE OPULENT MASTER BEDROOM OF THE CHATEAU (THE ROOM BUILT FOR THE BARON) IS ON THE MAIN LEVEL WITH STUNNING VIEWS OF THE GARDENS AND BEYOND INTO THE LOIRE VALLEY. THIS ROOM HAS A REMARKABLE PRIVATELY ACCESSED LIBRARY COMPLETE WITH A FULL SELECTION OF FRENCH LITERATURE. THE GRAND SALON, FORMAL DINING ROOM AND PETITE SALON, TEA SALON, GARDEN SALON, KITCHEN AND THE EXTRAORDINARY SALON CHINOIS, FILL THE MAIN LEVEL WITH AN HISTORIC ELEGANCE THAT IS AWE-INSPIRING. EACH WALL OF EVERY ROOM IS A WORK OF ART WITH ITS STUNNING BOISERIE, THE ORIGINAL WHITE OAK AND LIMESTONE FLOORS ARE IRREPLICABLE, AND THE LIGHT STREAMING IN FROM THE LOIRE VALLEY SUNSHINE IS RESPLENDANT.

THE SALON CHINOIS, POSSIBLY THE MOST SPECIAL ROOM IN THE CHATEAU, IS NAMED FOR THE CANVAS COVERED WALLS PAINTED WITH CHINOSERIE MURALS BY JEAN BAPTISTE PILLEMENT IN 1764. THESE WALLS, COVERED AND PROTECTED FROM NAZI PILLAGING, REMAIN INTACT AND ARE RECOGNIZED INTERNATIONALLY AS A PROFOUND EXAMPLE OF EIGHTEENTH CENTURY FINE ART.



CHÂTEAU DU GRAND-LUCÉ



WEDDINGS + EVENTS



WEDDINGS + EVENTS

CHÂTEAU DU GRAND-LUCÉ IS AN INCREDIBLE DESTINATION FOR ANY EVENT AND IS AN ENCHANTING LOCATION FOR A WEDDING. BUILT FOR A NOBLEMAN, THE CHATEAU AND THE GROUNDS ARE BREATHTAKING. THE SYMMETRY AND PRECISION OF THE CLASSICAL FRENCH GARDENS COUPLED WITH THE EIGHTEENTH CENTURY NEOCLASSICAL ARCHITECTURE OF THE FORTY-FIVE THOUSAND SQUARE FOOT CHATEAU IS EXTRAORDINARY



THE EIGHTY ACRES OF LOIRE VALLEY BEAUTY - WITH A LAKE, MEADOWS, HISTORIC WHITE OAK FOREST - SURROUNDED BY A MEDIEVAL WALL ARE TRULY OTHERWORLDLY. THE CHATEAU HAS A STUNNING ORANGERIE, WORKING GREENHOUSES, EXOTIC GARDEN WITH A SWIMMING POOL AND STATUES GIVEN AS A GIFT FROM KING LOUIS XV. WITH MULTIPLE COURTYARDS, TERRACES AND SECRET GARDENS - THE OPTIONS FOR AN EVENT? LIMITLESS.



CHÂTEAU DU GRAND-LUCÉ

WEDDING + EVENT PRICING

FROM A GRAND WEDDING OF NOBLE PROPORTIONS TO UNE PETITE SOIRÉE IN THE GARDEN, CHÂTEAU DU GRAND-LUCÉ HAS INFINITE POSSIBILITIES. ALL OPTIONS INCLUDE A CLASSIC FRENCH BREAKFAST, ONCE DAILY ROOM SERVICING - AND FULL USE OF THE GROUNDS... MAIS OUI.



12,000 EUROS PER NIGHT

A TOTAL OF TEN ROOMS AND SUITES - ON THE FIRST AND SECOND FLOOR OF THE CHATEAU, INCLUDING THE FABULOUS BARON'S SUITE WITH PRIVATE LIBRARY. USE OF ALL THE GROUNDS, GARDENS, SPA, POOL, ORANGERIE, AND BALLROOM.

15,000 EUROS PER NIGHT

FIFTEEN ROOMS AND SUITES, INCLUDING THE BARON'S SUITE WITH THE PRIVATE LIBRARY. THIS IS THE ENTIRE FORTY-FIVE THOUSAND SQUARE FOOT MAIN CHATEAU. USE OF ALL OF THE GROUNDS, GARDENS, SPA, POOL, ORANGERIE, AND BALLROOM.



18,000 EUROS PER NIGHT

A TOTAL OF SEVENTEEN ROOMS AND SUITES. THE ENTIRE FORTY-FIVE THOUSAND SQUARE FOOT MAIN CHATEAU WITH USE OF ALL THE GROUNDS, GARDENS, SPA, POOL, ORANGERIE, AND BALLROOM. PLUS, TWO FABULOUS SUITES, TRULY PIEDS-À-TERRÉ, CRAFTED IN AN ADJOINING BUILDING.



CHÂTEAU DU GRAND-LUCÉ

+33637071528 CHATEAUGRANDLUCE.COM
HELLO@CHATEAUGRANDLUCE.COM
9 PLACE DE REPUBLIQUE LE GRAND-LUCÉ
PAYS DE LOIRE FRANCE



PHOTO SHOOTS

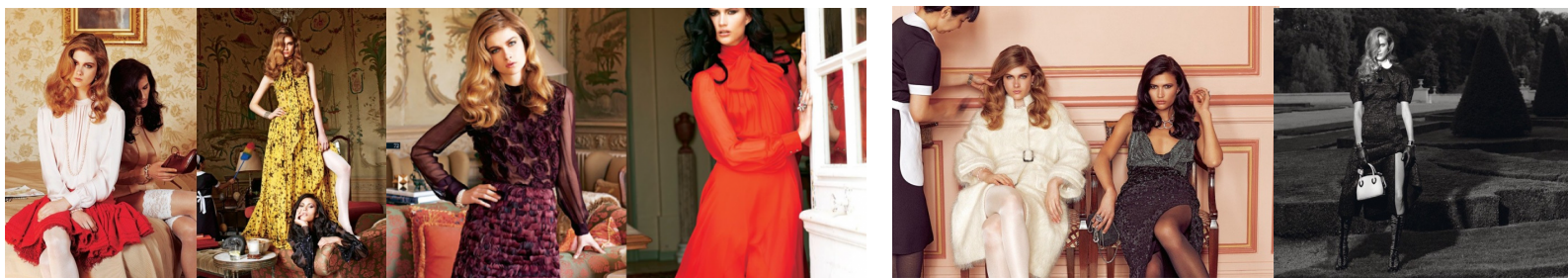


PHOTO SHOTS

WITH OPULENCE AND CRAFTSMANSHIP UNRIVALED IN LATER CENTURIES, THIS ICONIC LANDMARK IN THE LOIRE VALLEY IS AN INSPIRING FORMIDABLE SETTING FOR ANY PHOTO SHOOT. FILLED WITH NATURAL LIGHT STREAMING IN THROUGH THE MAGNIFICENT NEOCLASSICAL WINDOWS - PHOTOGRAPHY INSIDE AND OUTSIDE THE CHÂTEAU DU GRAND-LUCÉ IS EQUALLY LOVELY.



LOVED BY LVMH - LOUIS VUITTON FOR BOTH ITS SPLENDOR AND UNRESTORED RUINS IN ANCILLARY BUILDINGS, CHÂTEAU DU GRAND-LUCÉ IS AN INTERNATIONAL DARLING. THE TOWN OF LE GRAND-LUCÉ, WITH THE ENTIRETY OF ITS BUILDINGS MADE FROM LOCALLY QUARRIED LIMESTONE, IS QUINTESSENTIALLY FRENCH AND HAS THE "JE NE SAIS QUOI" FOR A PHOTO SHOOT THAT IS SUBLIME.



CHÂTEAU DU GRAND-LUCÉ

PHOTO SHOOT PRICING

WITH INEXHAUSTIBLE OPTIONS THROUGHOUT THE GROUNDS AND BUILDINGS, FROM UNFINISHED MEDIEVAL TIMBERS IN A CAVERNOUS SECRET RETREAT ACCESSED ONLY BY PULL DOWN STAIRS - TO THE EIGHTEENTH CENTURY NEOCLASSICAL OPULENCE OF THE GRAND SALON WITH METICULOUS BOISERIE, CRYSTAL AND SILK - CHÂTEAU DU GRAND-LUCÉ IS A CAPTIVATING SETTING FOR ANY TYPE OF SHOOT.



2,000 EUROS PER DAY

FULL DAY OF SHOOTING ON ENTIRE EIGHTY ACRES
- ALL EXTERIORS OF BUILDINGS AND FULL
GROUNDS - INCLUDING GARDENS, POOL, LAKE,
WOODS, GREENHOUSES AND ORANGERIE.

3,500 EUROS PER DAY

FULL DAY OF SHOOTING ON ALL EIGHTY ACRES,
PLUS INTERIOR ACCESS TO ALL BUILDINGS,
INCLUDING THE MAIN CHATEAU, SPA, BALLROOM,
ORANGERIE, AND ADDITIONAL UNFINISHED
OUTBUILDINGS.



6,500 EUROS PER DAY + OVERNIGHT

ALL EXTERIORS AND INTERIORS PLUS AN
OVERNIGHT STAY IN FOUR ROOMS/SUITES
INCLUDING THE OVER-THE-TOP BARON'S SUITE
WITH ADJOINING PRIVATE LIBRARY. INCLUDED IS
ONCE DAILY ROOM SERVICING AND CLASSIC
FRENCH BREAKFAST.



CHÂTEAU DU GRAND-LUCÉ

+33637071528 CHÂTEAU GRAND-LUCÉ.COM
HELLO@CHATEAUGRANDLUCÉ.COM
9 PLACE DE REPUBLIQUE LE GRAND-LUCÉ
PAYS DE LOIRE FRANCE

ACCOMMODATIONS

WITH THIRTEEN STUNNING ROOMS AND SUITES IN THE MAIN CHATEAU AND TWO FABULOUS SUITES IN AN ADJOINING BUILDING, CHÂTEAU DU GRAND-LUCÉ COMFORTABLY SLEEPS 36 ADULTS. THE INCREDIBLE DESIGN AND ROYAL PROPORTIONS ALLOW NEARLY ALL ROOMS AND SUITES PLENTY OF SPACE FOR AN ADDITIONAL SINGLE TO BE ADDED OR A CHILD'S COT.



THE GORGEOUS OAK FLOORS THROUGHOUT IN VARYING PATTERNS OF NOBILITY, COUPLED WITH CEILINGS OF ENORMOUS HEIGHT AND LOIRE VALLEY LIGHT STREAMING IN THROUGH ORIGINAL CASEMENT WINDOWS, PROVIDED THE PERFECT PALETTE FOR OUR DESIGN TEAM TO CREATE SPACES THAT EMBRACE THE OPULENT CHIC STANDARD SET BY JACQUES PINEAU DE VIENNAIS IN 1764.



CHÂTEAU DU GRAND-LUCÉ

ACCOMMODATIONS SUMMARY

THE FIFTEEN ROOMS AND SUITES ACCOMMODATE 36 ADULTS. IN ADDITION, A SINGLE BED OR CHILD'S COT CAN BE ADDED IN NEARLY ALL ROOMS AND SUITES. THE TOTALS FOR MAXIMUM OCCUPANCY ARE: 36 ADULTS, PLUS 10 ADDITIONAL SINGLES (ROLL-AWAY), PLUS 4 CHILD'S COTS.

GROUND FLOOR

ROOM 1 EUROPEAN SUPER KING (AMERICAN KING). ADD SINGLE OR CHILD'S COT.

FIRST FLOOR

ROOM 2 EUROPEAN SUPER KING (AMERICAN KING). ADD SINGLE OR CHILD'S COT.

ROOM 3 EUROPEAN SUPER KING (AMERICAN KING). ADD SINGLE OR CHILD'S COT.

ROOM 4 EUROPEAN SUPER KING (AMERICAN KING). ADD SINGLE OR CHILD'S COT.

ROOM 5 EUROPEAN SUPER KING (AMERICAN KING). ADD SINGLE OR CHILD'S COT.

ROOM 6 EUROPEAN SUPER KING (AMERICAN KING). ADD SINGLE OR CHILD'S COT.

ROOM 7 EUROPEAN SUPER KING (AMERICAN KING). BUILT-IN SINGLE SLEEPING NOOK

ROOM 8 EUROPEAN SUPER KING (AMERICAN KING). ADD SINGLE OR CHILD'S COT.

ROOM 9 EUROPEAN SUPER KING (AMERICAN KING). ADD SINGLE OR CHILD'S COT.

ROOM 10 TWO EUROPEAN KINGS (TWO AMERICAN QUEENS). ADD SINGLE OR CHILD'S COT.

SECOND FLOOR

ROOM 11 EUROPEAN SUPER KING (AMERICAN KING). ADD SINGLE OR CHILD'S COT.

ROOM 12 EUROPEAN SUPER KING (AMERICAN KING). ADD SINGLE OR CHILD'S COT.

ROOM 13 TWO EUROPEAN KINGS (TWO AMERICAN QUEENS). ADD SINGLE OR CHILD'S COT.

ADJOINING BUILDING

ROOM 14 STUDIO SUITE WITH LIVING ROOM AND GALLEY KITCHEN. EUROPEAN SUPER KING BED (AMERICAN KING). ADD SINGLE OR CHILD'S COT.

ROOM 15 TWO BEDROOM SUITE WITH LIVING ROOM AND GALLEY KITCHEN. EUROPEAN SUPER KING BED (AMERICAN KING) IN EACH BEDROOM. ADD SINGLE OR CHILD'S COT.

CHÂTEAU DU GRAND-LUCÉ

+33637071528 CHÂTEAU GRAND-LUCÉ.COM
HELLO@CHATEAUGRANDLUCÉ.COM
9 PLACE DE REPUBLIQUE LE GRAND-LUCÉ
PAYS DE LOIRE FRANCE

ACCOMMODATIONS DESCRIPTION



CHÂTEAU DU GRAND-LUCÉ

ACCOMMODATIONS DESCRIPTION

ROOM 1	THE BARON'S SUITE IS ASTONISHING AND PALATIAL. THIS SUITE INCLUDES THE ICONIC SALON CHINOIS AS A PRIVATE SITTING ROOM, A PRIVATE LIBRARY FILLED WITH A CURATED COLLECTION AND A PRIVATE ENTRANCE FROM THE WEST GARDEN, PERFECT GARDEN VIEWS OVER THE PARTERRE FROM ITS GROUND FLOOR CORNER LOCATION. FABULOUS MARBLE BATHROOM WITH SEPARATE SHOWER AND TUB. AN ADDITIONAL QUEEN BED CAN BE FURNISHED IN THE LIBRARY FOR FAMILIES UPON REQUEST. QUITE POSSIBLY THE MOST NOBLE SUITE IN EUROPE.
ROOM 2	STUNNING LARGE CORNER SUITE WITH SITTING AREA. TWO SETS OF EXTRAORDINARY CASEMENT WINDOWS WITH VIEWS OF THE VILLAGE AND LOIRE VALLEY BEYOND. GORGEOUS BATHROOM WITH MARBLE SHOWER AND SEPARATE TUB. VERY PRIVATE AND QUIET LOCATION ON THE FIRST FLOOR OF THE CHÂTEAU.
ROOM 3	BREATHTAKING CORNER ROOM WITH EXPANSIVE GARDEN VIEWS FROM ITS FIRST FLOOR LOCATION. THE BATHROOM IS OF UNEXPECTED GRAND PROPORTIONS WITH FULL GARDEN VIEWS OF ITS OWN.
ROOM 4	PERFECT FIRST FLOOR ROOM AT THE TOP OF THE GRAND STAIRCASE WITH PANORAMIC GARDEN VIEWS. THE BATHROOM OF SURPRISING MAGNIFICENT PROPORTIONS HAS A SEPARATE MARBLE SHOWER AND TUB. A GRAND CASEMENT WINDOW IN THE BATHROOM PROVIDES AN ABUNDANCE OF LOIRE VALLEY SUNSHINE.
ROOM 5	THE LUCÉ SUITE, LOCATED ON THE FIRST FLOOR, IS THE PENULTIMATE SUITE IN THE CHÂTEAU. FROM ITS CENTRAL POSITION ON THE SOUTH AXIS, IT IS ALIGNED WITH THE CENTRAL ALLÉE OF THE FORMAL GARDENS. WITH VIEWS THROUGH THE EIGHT ACRES. THE VIEWS FROM THE GRAND WINDOWS ARE THE SAME CONTEMPLATED BY THE PROFOUND THINKERS OF THE AGE OF ENLIGHTENMENT. COMPLETE WITH A SITTING AREA AND A BATHROOM OF ROYAL PROPORTIONS INCLUDING A SEPARATE SHOWER AND TUB, THIS SUITE IS IMPRESSIVE IN ITS SPLENDOR.
ROOM 6	THIS EXCEPTIONAL SUITE HAS TWO FULL SETS OF WINDOWS FROM WHICH TO VIEW THE FORMAL GARDENS AND BEYOND. SPACIOUS DEFINED SITTING AREA. GORGEOUS BATHROOM WITH MARBLE SHOWER, SEPARATE TUB.
ROOM 7	FABULOUS FIRST FLOOR, PETITE SUITE WITH BUILT IN ADDITIONAL SINGLE SLEEPING NOOK. TWO FULL SETS OF WINDOWS FROM WHICH TO VIEW THE FORMAL FRENCH GARDENS. LARGE BATHROOM WITH MARBLE SHOWER AND SEPARATE TUB.
ROOM 8	FANTASTIC FIRST FLOOR CORNER SUITE WITH SEPARATE PRIVATE SITTING ROOM. SOUTH FACING VIEWS OVER THE VILLAGE OF GRAND-LUCÉ AND THE ROLLING HILLS OF THE LOIRE VALLEY. BATHROOM WITH MARBLE SHOWER AND SEPARATE TUB. NOTE: THIS ROOM CAN ADJOIN ROOM 9 CREATING A TWO BEDROOM TWO BATH FAMILY SUITE.
ROOM 9	FIRST FLOOR ROOM WITH STUNNING VILLAGE VIEWS FROM TWO SETS OF ORIGINAL CASEMENT WINDOWS. BATHROOM WITH MARBLE SHOWER. NOTE: THIS ROOM CAN ADJOIN ROOM 8, CREATING A TWO BEDROOM TWO BATH FAMILY SUITE.
ROOM 10	THIS SPECIAL ROOM IS ON THE CENTER AXIS OF THE NEOCLASSICALLY DESIGNED CHÂTEAU. SOUTH FACING, THE WINDOW IS PERFECTLY ALIGNED WITH THE FRONT COURT D'HONNEUR AND BEAUTIFUL ENTRY GATE. STUNNING VIEWS OF THE VILLAGE OF LE-GRAND-LUCÉ AND THE LOIRE VALLEY. BATHROOM WITH MARBLE SHOWER.
ROOM 11	INCREDIBLE PRIVATE CORNER PETITE SUITE ON THE SECOND FLOOR OF THE CHÂTEAU. FACING SOUTH TOWARDS THE VILLAGE OF LE-GRAND LUCÉ, THE VIEWS FROM THE TOP FLOOR OF THE CHATEAU ARE BREATHTAKING. DEFINED SITTING AREA. BATHROOM WITH SEPARATE MARBLE SHOWER AND TUB.
ROOM 12	THIS INCREDIBLY PRIVATE AND STUNNING CORNER SUITE IS LOCATED ON THE SECOND FLOOR. FACING THE FORMAL GARDENS THE VIEW FROM THE TOP FLOOR OF THE CHÂTEAU IS EXQUISITE. DEFINED SITTING AREA. BUILT IN READING NOOK AND MULTIPLE WINDOWS ON TWO WALLS. THE BATHROOM IS DELIGHTFULLY GRAND WITH A SEPARATE MARBLE SHOWER, TUB AND A VIEW WINDOW OF ITS OWN.
ROOM 13	FABULOUS SECOND FLOOR ROOM WITH COMMANDING VIEWS OF THE CLASSIC FRENCH GARDENS. UNEXPECTED STUNNING BATHROOM OF GRAND PROPORTIONS WITH SEPARATE MARBLE SHOWER AND TUB. SWEEPING VIEWS OF THE COUNTRYSIDE THROUGH STORYBOOK BATHROOM WINDOW.
ROOM 14	THIS SUITE IS A TRUE PIED-À-TERRÉ LOCATED ON THE FIRST FLOOR OF AN ADJOINING BUILDING. THIS STUDIO APARTMENT HAS OPEN BEAMED CEILINGS WITH ORIGINAL TIMBERS, FABULOUS HARDWOOD FLOORS, LIVING AREA AND GALLEY KITCHEN. ENORMOUS WINDOWS SPANNING THE SOUTH WALL PROVIDE AN INCREDIBLE VIEW OF THE GARDENS AND PROPERTY. THE BATHROOM IS A MARBLE JEWEL WITH SHOWER.
ROOM 15	THIS SUITE IS A LARGE TWO-BEDROOM PIED-À-TERRÉ LOCATED ON THE FIRST FLOOR OF AN ADJOINING BUILDING. WINDOWS ON TWO SIDES PROVIDE PEEK VIEWS OF THE COURTYARDS AND THE STUNNING COURT D'HONNEUR. SEPARATE LIVING ROOM AND GALLEY KITCHEN. THE BATHROOM IS CLAD IN MARBLE WITH A SHOWER.

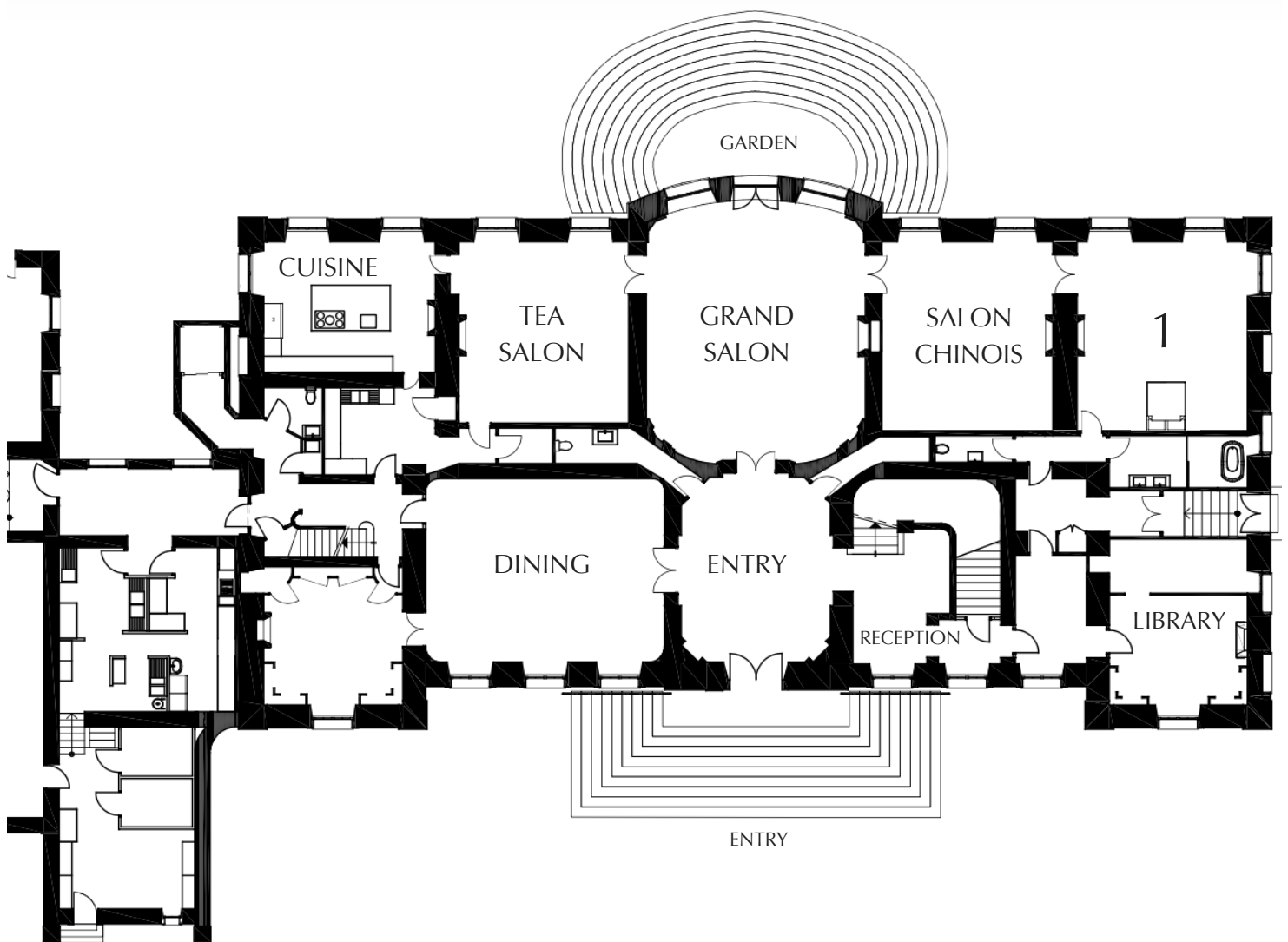
CHÂTEAU DU GRAND-LUCÉ

+33637071528 CHÂTEAU GRAND-LUCÉ.COM
HELLO@CHATEAUGRANDLUCÉ.COM
9 PLACE DE REPUBLIQUE LE GRAND-LUCÉ
PAYS DE LOIRE FRANCE

CHÂTEAU FLOOR PLANS

GROUND FLOOR

REZ-DE-CHAUSSÉE



CHÂTEAU DU GRAND-LUCÉ

CHÂTEAU FLOOR PLANS

FIRST FLOOR

ETAGE 1



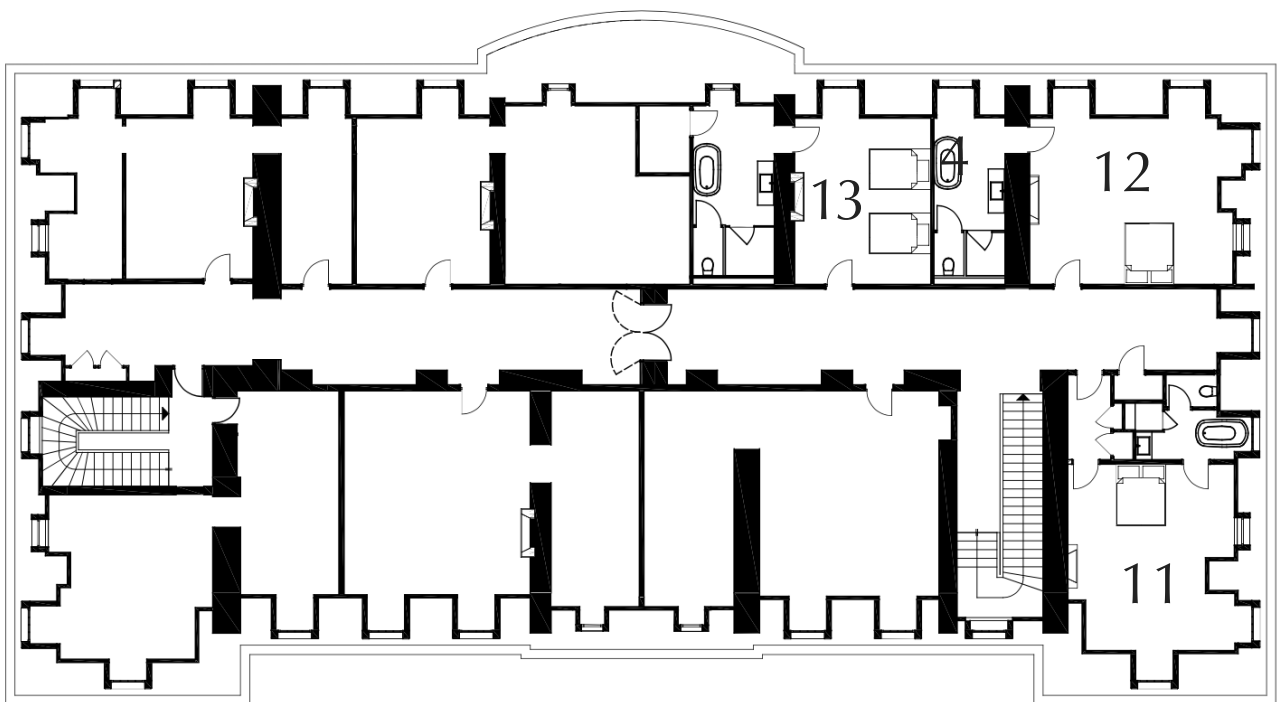
CHÂTEAU DU GRAND-LUCÉ

+33637071528 CHÂTEAU GRAND-LUCÉ.COM
HELLO@CHATEAUGRANDLUCÉ.COM
9 PLACE DE REPUBLIQUE LE GRAND-LUCÉ
PAYS DE LOIRE FRANCE

CHÂTEAU FLOOR PLANS

SECOND FLOOR

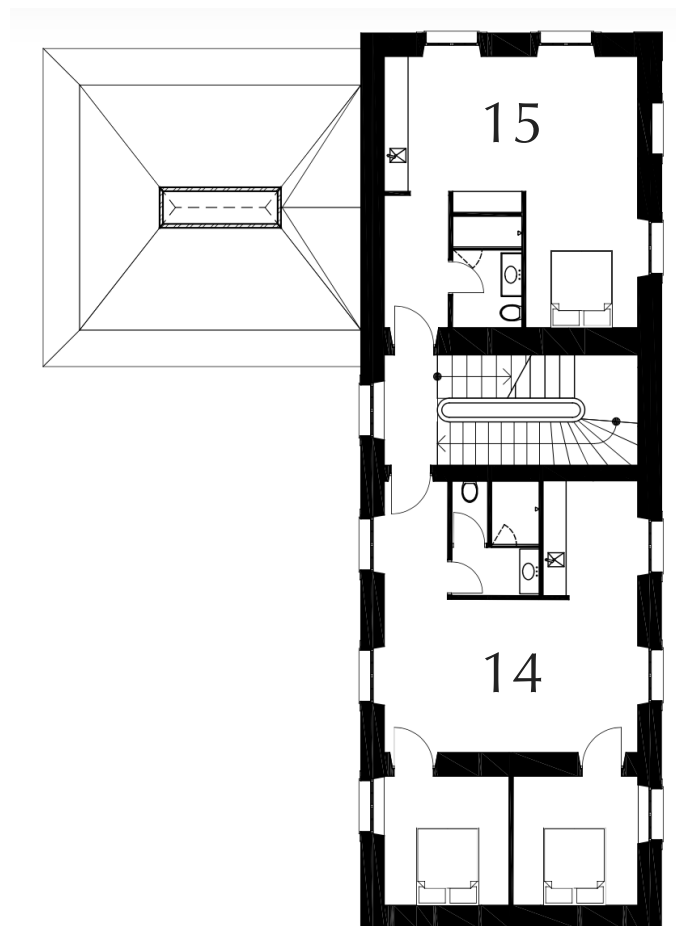
ETAGE 2



CHÂTEAU DU GRAND-LUCÉ

CHÂTEAU FLOOR PLANS

ADJOINING BUILDING



CHÂTEAU DU GRAND-LUCÉ

+33637071528 CHÂTEAU GRAND-LUCÉ.COM
HELLO@CHATEAUGRANDLUCÉ.COM
9 PLACE DE REPUBLIQUE LE GRAND-LUCÉ
PAYS DE LOIRE FRANCE

"THE PERSON WHO HAS LIVED THE MOST IS NOT THE ONE WITH THE MOST YEARS BUT THE ONE WITH THE RICHEST EXPERIENCES." JEAN-JACQUES ROUSSEAU

CHANEL DROR AND ERIC TARLO WEDDING
PHOTO CREDIT: SARAH FALUGO



+33637071528
HELLO@CHATEAUGRANDLUCE.COM
9 PLACE DE REPUBLIQUE LE GRAND-LUCÉ
PAYS DE LOIRER FRANCE